



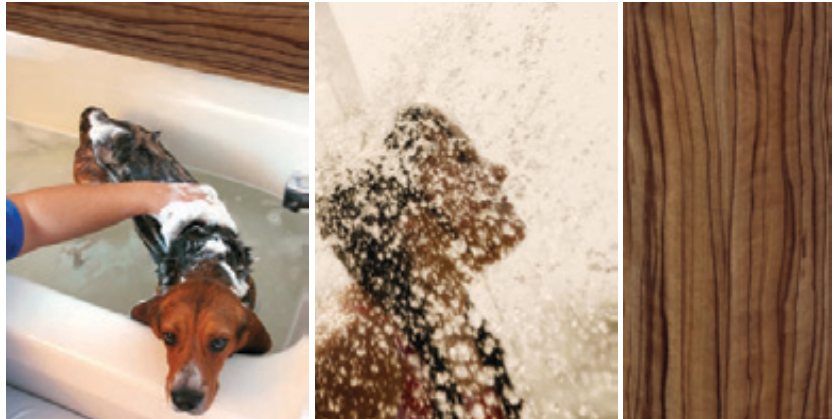
Perla

Bathroom Panels

A Straightforward Alternative to Tiling







A Clean Modern Look for Your Bathroom

The revolution in bathroom design

You know that it makes sense to incorporate beautiful, large format, easy to clean panels into your bathroom design; because you don't want to waste time experiencing the maintenance of dirty, mouldy grouting which not only is impossible to clean, but which also harbours a sea of germs.

www.perlanel.com
sample hotline: 01382 443555

A Straightforward Alternative to Tiling





The realistic stone look

The super gloss texture of the Stones range is ideal for use in the bathroom; with natural effects made possible using Perla Panels at a cost unimaginable using conventional products. Design a few selected areas using this product; in the shower or as a feature behind a bath or basin for a stunning bathroom effect.



Stone Quarry Dust



Stone Travertine





Bathrooms for the busy

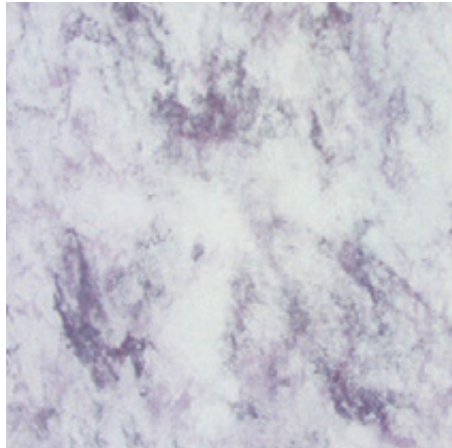
You don't want to waste time cleaning bathrooms when life is out there waiting for you! Relax in a nice warm bath and admire your new bathroom panels. Manhattan offers a range of classic gloss marble type designs which are easy to incorporate into any bathroom to offer subtle background colourations in warm and soft tones.



Manhattan Broadway



Manhattan Madison



Manhattan Harlem



Manhattan Hudson

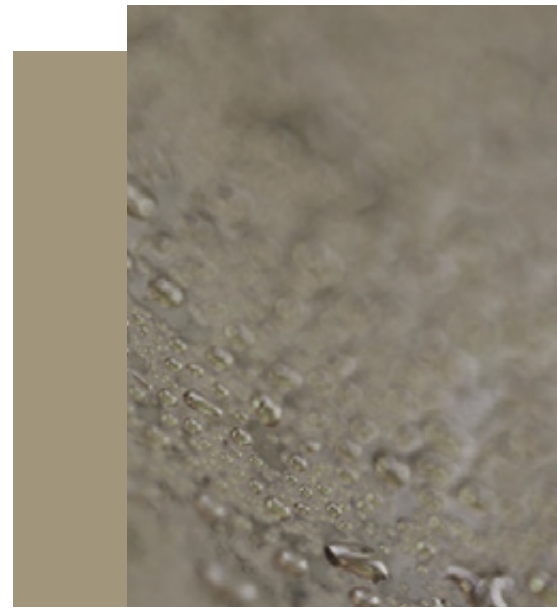
Manhattan





A subtle hi-tech appearance

For a modern appearance, you need the Machine range in your bathroom. With a metallic sheen which throws out light at different angles for an eye-catching, contemporary look. The highest of gloss levels are apparent with these surface designs which display machine metal precision.



Machine Gunmetal



Machine Verdigris





The essence of nature's grains

The Nature range shows vertical striped designs which offer a new range of design possibilities using Perla's high gloss texture to give a feeling of smooth sophistication across the most imaginative and fashionable range of natural tones.



Nature Silver Red



Nature Silver Grey



Nature Zebra

Nature





The sharpest graphics in town

Perla Metallic features highly polished abstract metallic designs. Clean, fresh and contemporary these colours offer an easy to maintain surface. Pure brilliance to complement the best in contemporary design.



Metallic White



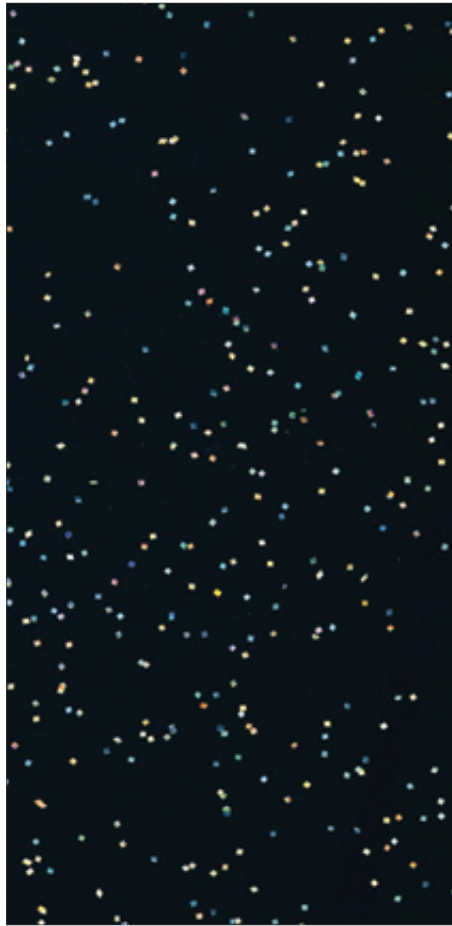
Metallic Black



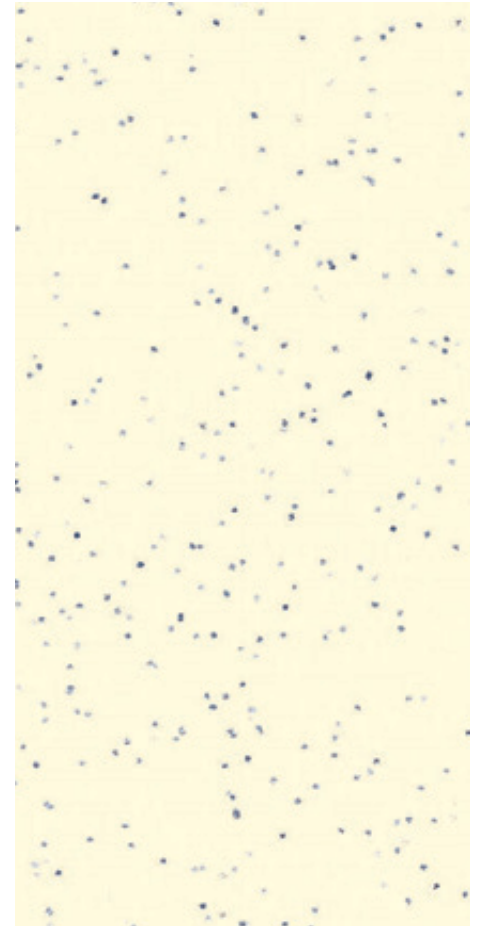


Add some glamour to your home

Starstruck? Then you need Stardust in your bathroom. With bold white and black colours encrusted with coloured flakes these two are destined to play a leading role in your home.



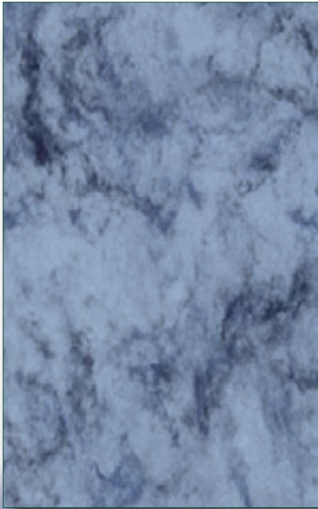
Stardust Black



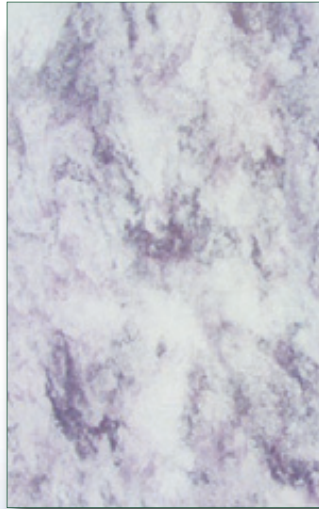
Stardust White

Stardust

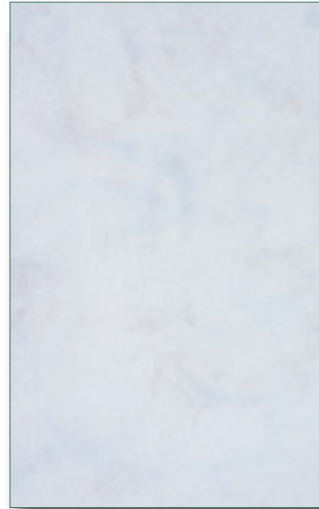




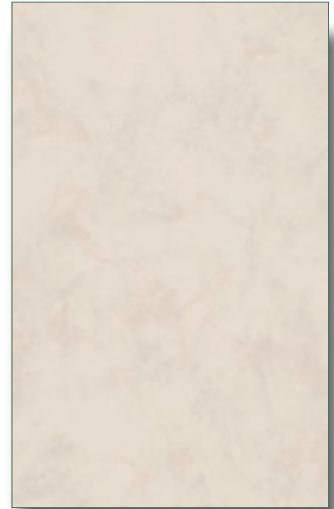
Manhattan Hudson



Manhattan Harlem



Manhattan Broadway



Manhattan Madison



Machine Verdigris



Machine Gunmetal

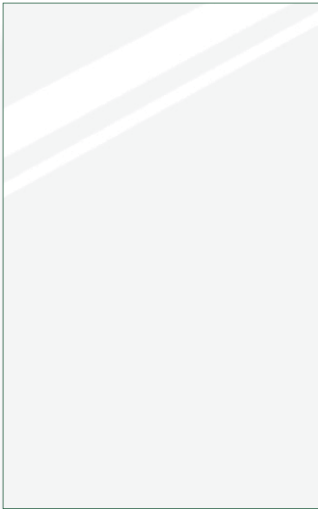


Stone Quarry Dust



Stone Travertine

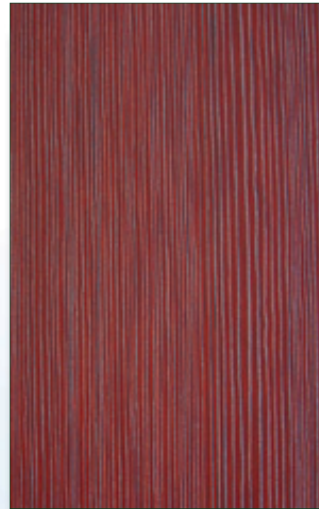




Element White



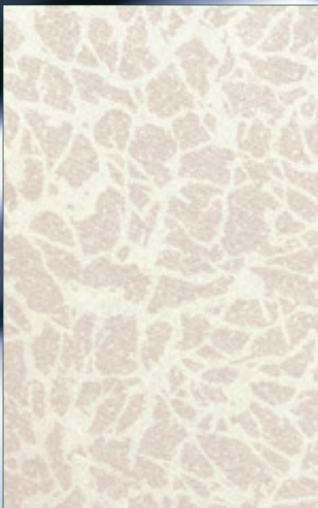
Nature Silver Grey



Nature Silver Red



Nature Zebra



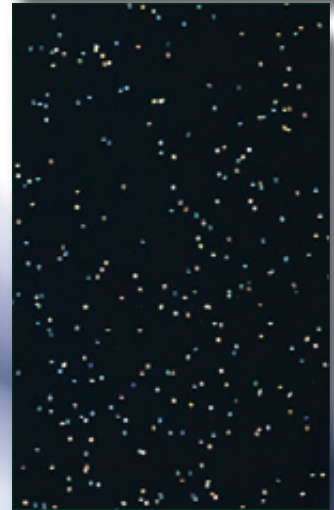
Metallic White



Metallic Black



Stardust White



Stardust Black



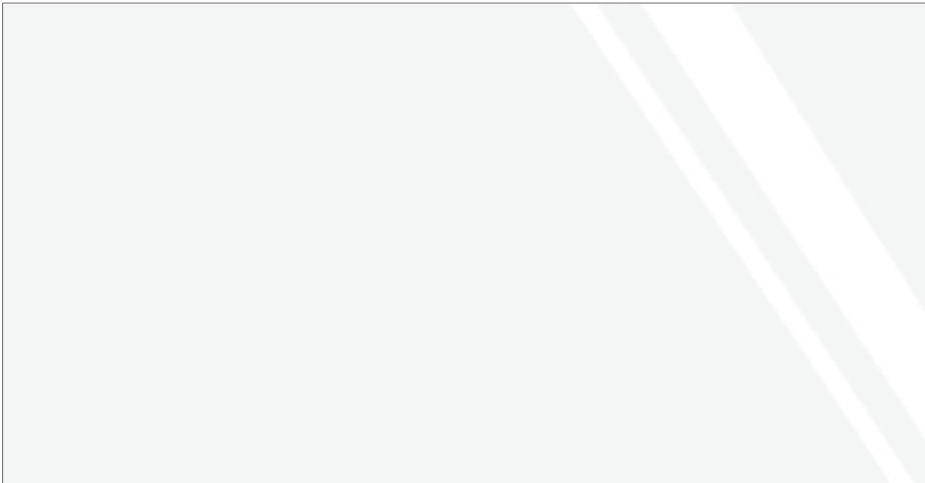
Colour Range





Pure colour as nature intended

As tough as any urban setting; this high gloss white gives a smooth tactile feel to match the richness of white ceramic for a classic, yet still trend setting appeal for interiors to look hygienic and clean.



Element White



Element

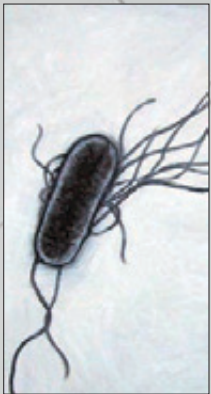




Life in Your Bathroom

A hygienic solution to dirty, mouldy, ugly tile grout

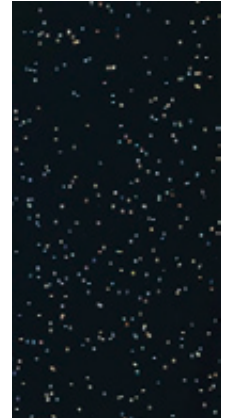
No dirty, ugly tile grout lines mean no opportunity for germs to start breeding - one wipe and Perla is clean. Whereas with conventional tiling, the porous nature of the grout may allow harmful organisms to prosper and grow within the structure. The high gloss laminate surface will not harbour germs and is easy to maintain, looking great for years to come.



The Hygienic Solution







Perla Panel Specification

- Surface: High pressure, High Gloss Laminate
Core: 9mm Exterior Grade MDF (11mm total)
Panel Size: 2400 x 1200mm (8' x 4' nominal)
2400 x 900mm (8' x 3' nominal)
Description: Panels are square edged and are designed to be used in combination with polished Perla profiles.

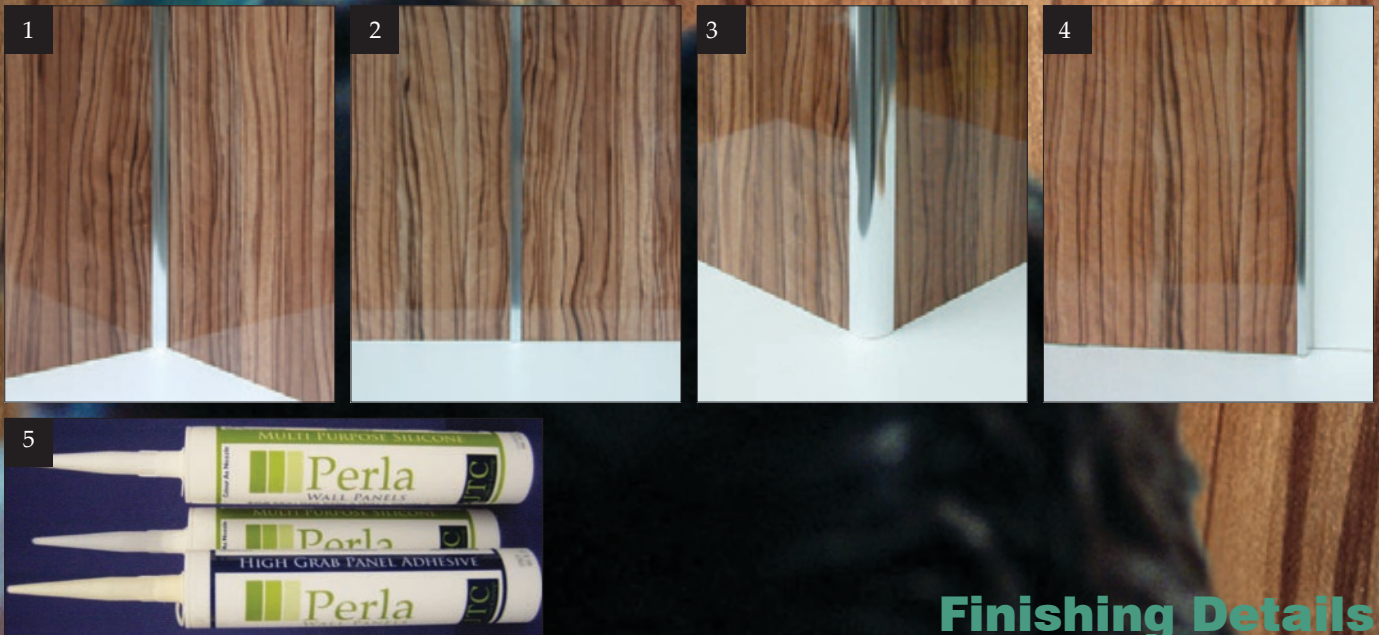
Installation:

Perla can be installed over any existing wall finish provided it is in a sound and dry condition. Panels are quickly fixed using Perla High Grab adhesive which will adhere to plasterboard, ceramic tiles and other existing finishes. Where a wall is damaged or out of true, it may be necessary to first install battens at 300mm vertical or horizontal centres which can be used to support and fix the panels.

Installation can normally be carried out by a joiner or competent DIY'er who can cut the panels to size and fix the joining profiles.







Finishing Details

- 1: Internal Corner Chrome Profile
- 2: Joining Chrome Profile
- 3: External Corner Chrome Profile
- 4: Finishing Cap Chrome Profile
- 5: Adhesive & Silicones

Fast installation with no need for special tools or equipment

Perla is a complete system of wall panelling which is a perfect partner for your shower or bathroom installation. The profiles which complete the system are designed to match the chrome profiles of your shower enclosure and taps and fittings.

There are neat solutions for internal corners, external corners, for joining two panels or finishing the edge of a panel. This makes installation straightforward since panels can be cut like any timber board with the cut edges hidden in the profiles. Silicone is used in each profile to form a water tight joint.

Panels are a convenient 2400mm (8') high to suit most standard ceiling heights and come in both 1200mm (4') and 900mm (3') widths.



1. This shower was installed around five years ago; however it was suffering from grout infestation and had become impossible to restore to its original white condition even using specialist cleaners.

2. There was a problem with a leak at the base of each corner which leaked water and gave rise to a peculiar smell.

3. On investigation it was apparent that there was a problem requiring a complete renovation of the walls whilst retaining the same enclosure, tray and plumbing.

4. Once some of the enclosure elements were stripped away, the horrors of what lies beneath the surface start to emerge.

5. Removing the tiles left areas of adhesive and holes. If the wall were to be re-tiled then it would be necessary to replace the layer of plasterboard. With Perla Panels, any holes can be bridged over and taken up with the panel adhesive.

6. The source of the smell was caused by a gap between the tiling and the tray rotting the plasterboard.

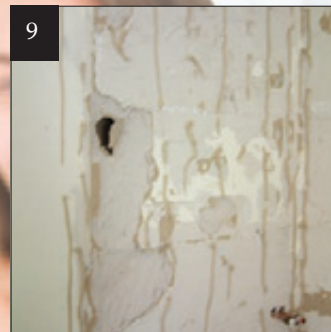
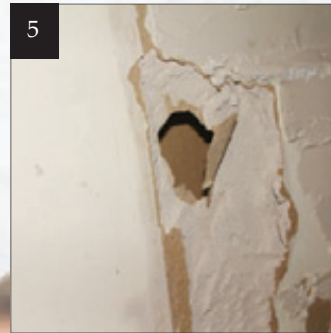
7. Perla installation is a clean operation because there are no wet trades and panels can be cut outside to the required overall size using a circular saw. A standard panel is 2400mm high to suit a modern ceiling height.

8. Holes can be cut in panels using a hole cutter. Cut edges are hidden within the profile system which means that there is no problem with slight edge chipping.

9. The face of the panels is covered in a protective film to eliminate scratching of the decorative surface. Use Perla High Grab adhesive on the wall to secure the panels to the wall.

10. A waterproof seal is achieved using a system of aluminium profiles which are filled with Perla Silicone to ensure that there is no possible water penetration.

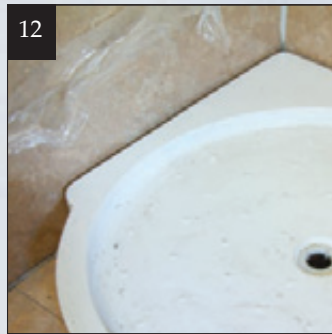
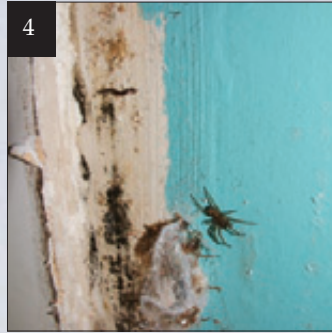
11. Panels simply sit flush against the sub wall, held with the profiles and sealed using silicone. An internal corner profile is an excellent solution to finish off the inside corner with no possibility of leaks.



12. The tray placed against the completely panelled shower enclosure meaning that there is no vulnerable joint just where the most water will be present. A silicone seal is formed between the tray and the wall. For in-situ trays the panels can be placed over the tray edge leaving a 2mm silicone gap or use a proprietary seal.

13. Fixing the enclosure and accessories to the panels is easy. Seal any holes made with silicone.

14. The completed installation is quickly ready for use and will provide years of maintenance free service. Make sure the use of exposed silicone is minimised and that critical joints are regularly checked for integrity.



Easy to Install

Fast and less messy than ceramic tiling

Because the installation of Perla is a dry operation rather than a wet trade involving plaster, tile adhesives, grout and water for washing down; it is considerably faster, less messy and a bathroom installation can be carried out by any competent joiner in one visit.

Not only is Perla fast to install, the bathroom will be ready for use almost immediately. In a renovation situation the panels can be installed over the top of old finishes and damaged walls without the need for replastering or refinishing. No need to chip off the old tiles and dispose of them; and no dust from the demolition.

A Case Study



Perla

YOUR

Perfect Solution

Manufactured in the UK by
JTC Furniture Group

JTC Furniture Group

Camperdown Works
Harrison Road
Dundee
DD2 3SN

Unit 61, Batley Business Park
Technology Drive
Batley, W. Yorks
WF16 6ER

T: 01382 833832

T: 01924 441888

www.perlapanels.com

JTC
Furniture Group

The colours and designs indicated in this brochure are for guidance only. Please ask for samples of actual product before specifying.
June 2011